



Technical specification

Cold milling machine W 35



	Cold milling machine W 35	
Milling width max.	14" 350 mm	
Milling depth *1	0–2" 0–60 mm	
Milling drum		
Tool spacing	1/2" 12 mm	
Number of tools	36	
Drum diameter with tools	18" 460 mm	
Engine		
Manufacturer	Deutz	
Type	F3M 2011	
Cooling	Air/Oil	
Number of cylinders	3	
Output	31.5 kW/42.2 HP/42.8 PS	
Engine speed	2,300 min ⁻¹	
Displacement	142 in ³ 2,331 cm ³	
Fuel consumption, 1/1 load	2.2 gal/h 8.5 l/h	
Fuel consumption, 2/3 load	1.6 gal/h 6 l/h	
Speed / gradeability		
Milling gear	0–25 m/min	
Travel gear	0–6 km/h	
Theoretical gradeability in 1 st gear	50 %	
Theoretical gradeability in 2 nd gear	15 %	
Transversal inclination, max.	8°	
Ground clearance at front	12" 300 mm	
Weights *2	Standard	With additional weights
Front axle load, full tanks	3,042 lbs 1,380 daN (kg)	4,189 lbs 1,900 daN (kg)
Rear axle load, full tanks	3,131 lbs 1,420 daN (kg)	3,792 lbs 1,720 daN (kg)
Own weight	5,401 lbs 2,450 daN (kg)	7,209 lbs 3,270 daN (kg)
Operating weight, CE *3	5,842 lbs 2,650 daN (kg)	7,650 lbs 3,470 daN (kg)
Operating weight, full tanks	6,173 lbs 2,800 daN (kg)	7,981 lbs 3,620 daN (kg)
Tyres		
Type	Solid rubber	
Tyre size, front	20" x 10" Ø 500 x 250 mm	
Tyre size, rear	16" x 5" Ø 405 x 130 mm	
Tank capacities		
Fuel tank	23.8 gal 90 l	
Hydraulic fluid tank	13.2 gal 50 l	
Water tank	72.6 gal 275 l	
Electrical system	24 V	
Shipping dimensions (L x W x H)	9' x 3'10" x 5'11" 2,740 x 1,175 x 1,800 mm	

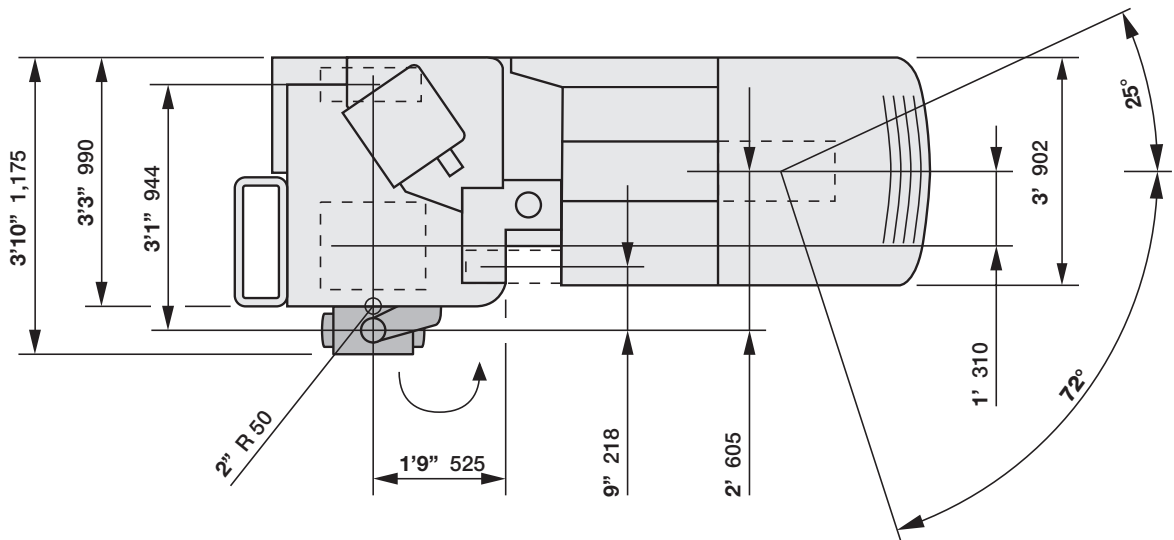
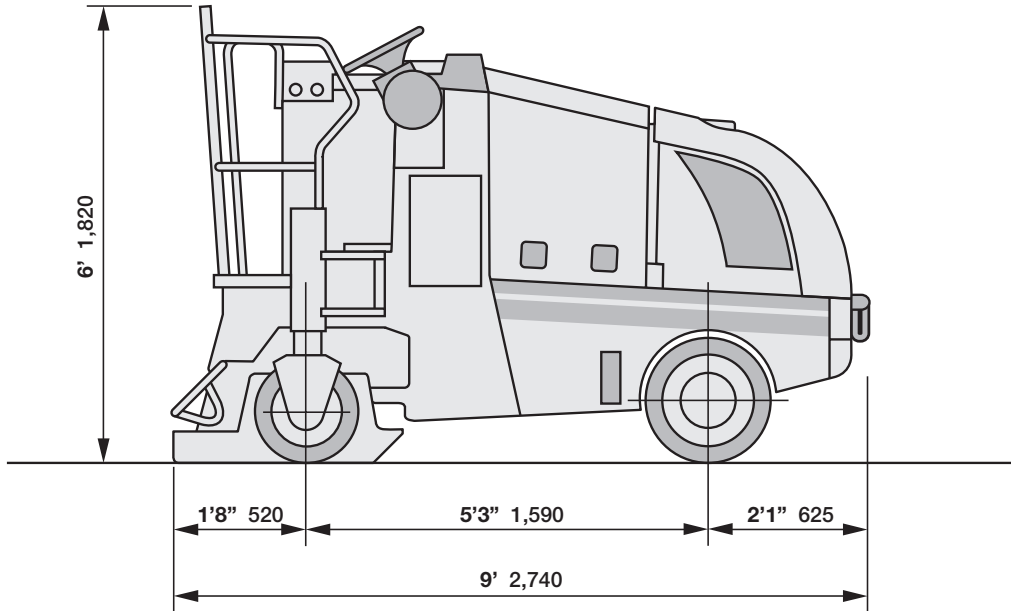
*1 = The maximum milling depth may deviate from the value indicated, due to tolerances and wear.

*2 = All weights refer to basic machine without any additional equipment.

*3 = Weight of machine with half-full water tank, half-full fuel tank, driver (165.4 lbs/75 kg) and tools.

Technical description

Dimensions in American standard and mm



Basic design

Compact three-wheeled machine with front-wheel drive and mechanical milling drum drive.

Chassis

Robust welded structure with mounts for the individual units and superstructures as well as bolt-on tanks for hydraulic oil and water.

All components are readily accessible for maintenance and servicing.

Optional supplementary weights (total approx. 1,808 lbs (820 kg)) increase the traction when milling hard pavements. The weights are mounted in a “drawer system” and can be added individually.

Operator’s stand

The operator’s stand is positioned above the milling drum unit, thus providing a very good view to the front of the milling drum. Upon request, the footboard with safety cutout can be supplemented by a stand-up seat.

The controls are conveniently located within easy reach.

Drive unit

The machine is driven by a 4-cylinder diesel engine meeting the stringent emission standards EPA II in force in the USA and COM II in force in the EC.

Soundproofing

Noise levels are reduced by the standard soundproofing which also protects both the operators and the surroundings against any nuisance due to noise.

Milling drum

The milling drum is positioned on the rear right side of the machine and works in an up-milling direction.

Toolholders accommodating the round-shank cutters are welded onto the body of the drum.

Several different milling drums are available for special jobs, such as for removing road markings.

Tool changes

The milling drum can easily be reached for tool changes via a drum door which opens wide with automatic safety cutout for the engine.

Suspension

The rear wheels are designed as supporting wheels with individual suspension.

The right-hand rear wheel can be swivelled in front of the milling drum to improve the side clearance.

Travel drive

The front wheel is driven by a hydraulic motor.

The advance speed is infinitely variable in both gears.

Steering

The machine is equipped with a finger-light hydraulic steering system.

Brake system

Braking is achieved by drag from the hydrostatic travel drive (closed circuit).

The machine is additionally equipped with an automatic spring braking system in the travel drive.

Milling depth adjustment

The milling depth is adjusted via the hydraulic height adjustment units at the rear. The set values can be read from scales left and right and can be adjusted by means of a limit stop.

Hydraulic system

Separate hydraulic systems for travel drive and control functions with ultrafine filters and coolers.

Electrical system

24 V system with 3-phase alternator and two 12 V batteries, starter, socket outlet and acoustic horn, readily accessible Emergency OFF switch and complete working lights.

Water spray system

The system sprays water into the milling drum chamber. This largely avoids the amount of dust generated and reduces the cutter wear. The spray nozzles can be removed without difficulty for cleaning.

Safety during transport

Safe retaining lugs for securing the machine on a low-bed trailer or for loading the machine by crane.



WIRTGEN AMERICA

Wirtgen America Inc.
6030 Dana Way · Nashville, TN 37013, USA
Phone: (615) 501-0600 · Fax: (615) 501-0691
Internet: www.wirtgenamerica.com