



Technical specification

# Cold Milling Machine W 1900



# Technical specification

<b>Cold milling machine W 1900</b>	
<b>Milling width</b>	6' 7" (2,000 mm)
<b>Milling depth *1</b>	0–1' 1" (0–320 mm)
<b>Milling drum</b>	
Tool spacing	5/8" (15 mm)
Number of tools	162
Drum diameter with tools	3' 3" (980 mm)
<b>Engine</b>	
Manufacturer	Daimler Chrysler
Type	OM 502 LA
Cooling	Water/Air (intercooler)
Number of cylinders	8
Rated power at 2,000 min <sup>-1</sup>	340 kW/455 HP/462 PS
Maximum power at 1,800 min <sup>-1</sup>	350 kW/469 HP/476 PS
Engine speed	2,000 min <sup>-1</sup>
Displacement	4.2 gal (15.9 l)
Fuel consumption, full load	22.2 gal/h (84 l/h)
Fuel consumption, 2/3 load	14.8 gal/h (56 l/h)
Emission standards	EPA Tier III, EU Stage III a
<b>Electrical system</b>	
	24 V
<b>Filling capacities</b>	
Fuel tank	224.5 gal (850 l)
Hydraulic fluid tank	71.3 gal (270 l)
Water tank	422.7 gal (1,600 l)
<b>Driving characteristics</b>	
Travel speed in milling gear, max.	0–97 ft/min (0–29.5 m/min)
Travel speed in travel gear, max.	0–2.8 mph (0–4.5 km/h)
<b>Crawler tracks</b>	
Crawler tracks front and rear (L x W x H)	5' 3" x 10" x 1' 10" (1,600 x 260 x 550 mm)
<b>Loading the milled material</b>	
Belt width of primary conveyor	2' 7" (800 mm)
Belt width of discharge conveyor	2' 7" (800 mm)
Theoretical capacity of discharge conveyor	379 yd <sup>3</sup> /h (290 m <sup>3</sup> /h)
<b>Shipping dimensions</b>	
Machine (L x W x H)	21' 8" x 8' 4" x 9' 10" (6,600 x 2,550 x 3,000 mm)
Discharge conveyor (L x W x H)	27' 11" x 4' 3" x 3' 9" (8,500 x 1,300 x 1,150 mm)

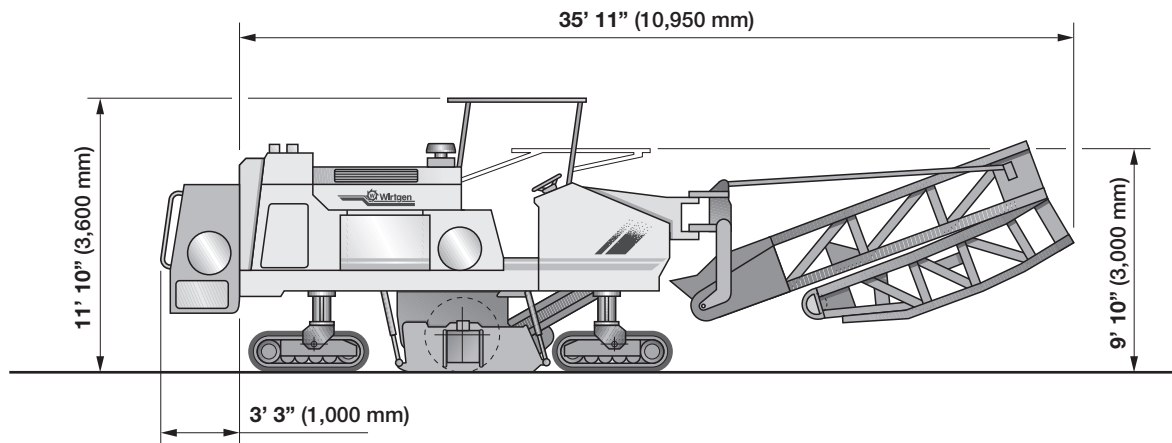
\*1 = The maximum milling depth may deviate from the value indicated, due to tolerances and wear.



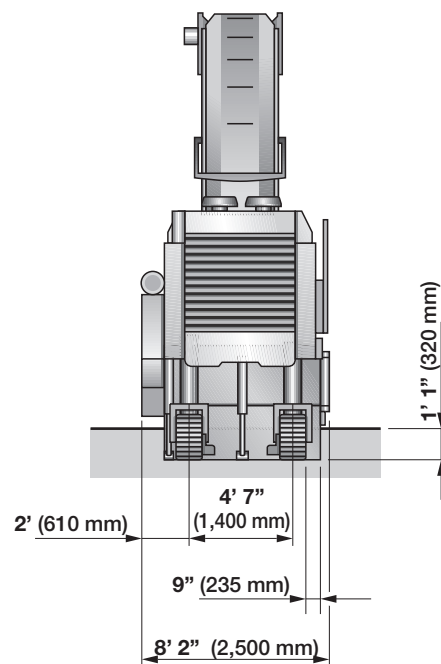
	Standard weights of cold milling machine W 1900
Shipping weight	55,997 lbs (25,400 daN (kg))
Operating weight, CE*	58,819 lbs (26,680 daN (kg))
Operating weight, max.	61,641 lbs (27,960 daN (kg))
	Add-on weights
<b>FCS Light milling drum assembly</b>	
FCS Light milling drum assembly, milling width 2,000 mm, milling depth 0–320 mm, number of cutting tools: 162	1,455 lbs (660 daN (kg))
<b>Optional equipment</b>	
Canopy	551 lbs (250 daN (kg))
Folding conveyor	793 lbs (360 daN (kg))
Additional water tank 264.18 gal (1,000 l) unfilled	1,807 lbs (820 daN (kg))

\* = Weight of machine with half-full water tank, half-full fuel tank, driver (165.4 lbs/75 kg) and tools.

**Special equipment: Canopy, folding conveyor and additional water tank**  
Dimensions

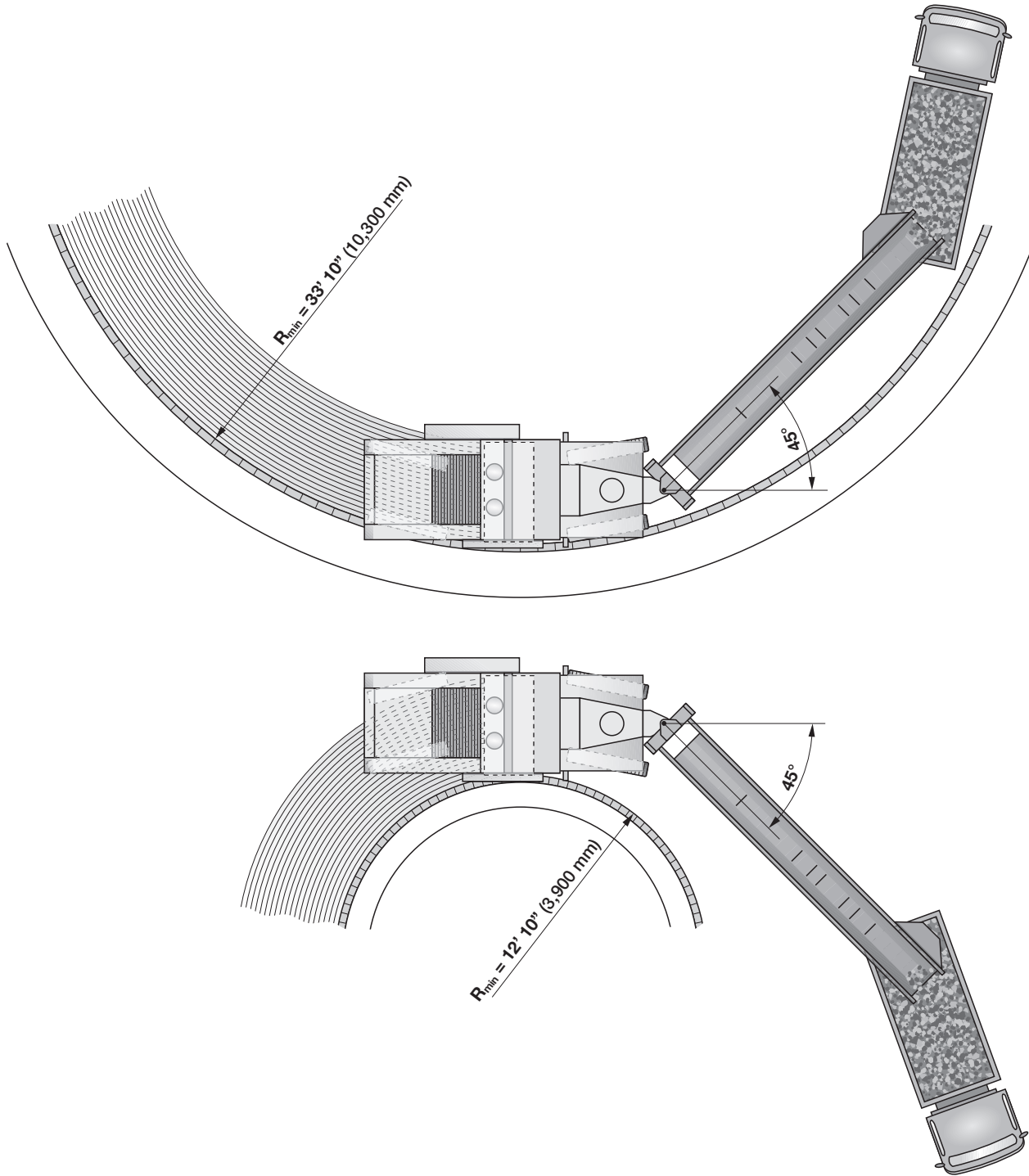


**Rear view W 1900**  
Dimensions



Turning radius of cold milling machine W 1900 at 6" (150 mm) milling depth

Dimensions



## Equipment features of cold milling machine W 1900

### Standard equipment:

#### Operator's platform

- ✔ Convenient control panel with practical switches
- ✔ Lockable covers for control panels
- ✔ Individually adjustable driver's seat
- ✔ Vibration-damped operator's platform
- ✔ Access left and right with convenient fold-away ladder
- ✔ Exterior rear view mirror

#### Machine control system

- ✔ Digital electric height indication
- ✔ Automatically engageable hydraulic traction control (flow divider)
- ✔ Automatically engaging maximum milling speed control
- ✔ Freely selectable steering modes of crawler tracks
- ✔ Engageable high-pressure water system
- ✔ Engaging water injection in milling chamber
- ✔ Engaging water spray system at primary conveyor

#### Engine

- ✔ Highly effective soundproofing of entire engine compartment

#### Milling drum assembly with milling drum

- ✔ Standard assembly with milling width 6' 7" (2,000 mm)
- ✔ Milling drum in welded double-pin toolholder design
- ✔ Additional control switches for scraper blade and steering functions at ground level
- ✔ Right-hand side plate in hinged design
- ✔ Hydraulically opening scraper blade with convenient lock mechanism
- ✔ Replaceable wearing segments on side plates

#### Loading the milled material

- ✔ Discharge conveyor slewing angle left 45 degrees
- ✔ Discharge conveyor slewing angle right 45 degrees
- ✔ Conveyor system with continuous conveying speed

#### Travelling gear/Height adjustment

- ✔ Extremely wear-resistant polyurethane track pads
- ✔ 4-track steering
- ✔ Height adjustment via proportional valve control

#### Miscellaneous

- ✔ Lighting package with 10 spotlights
- ✔ Comprehensive tool kit
- ✔ Comprehensive safety package with 5 emergency stop buttons

### Optional equipment:

#### Operator's platform

- ✔ Canopy
- ✔ Sunshade

#### Machine control system

- ✔ LEVEL PRO automatic leveling system
- ✔ Additional LEVEL PRO control panel
- ✔ Slope sensor
- ✔ Ultrasonic sensor
- ✔ Scanning a wire with transducing sensor
- ✔ Pre-installation for Multiplex system with switching board for multiple sensors
- ✔ 3-fold Multiplex

#### Engine

- ✔ Cyclonic air filter
- ✔ Air compressor system
- ✔ Operation of cold milling machine with bio-degradable hydraulic fluid
- ✔ Refuelling pump for diesel tank

#### Milling drum assembly with milling drum

- ✔ FCS Light milling drum housing for milling width 6' 7" (2,000 mm)
- ✔ Milling drums with HT11 quick-change toolholder system
- ✔ Milling drum with milling width 6' 7" (2,000 mm) LA8 FCS
- ✔ Milling drum with milling width 6' 7" (2,000 mm) LA6x2 FCS
- ✔ Milling drum with milling width 6' 7" (2,000 mm) HT11 LA20 FCS
- ✔ Hydraulically lifting drum plates
- ✔ Additional lock-valve for scraper blade
- ✔ Drum turning device for cutting tool replacement
- ✔ Pneumatic cutting tool driver and extractor
- ✔ Mounting carriage for milling drums

#### Loading the milled material

- ✔ Hydraulically operated folding discharge conveyor, long
- ✔ Conveyor system with adjustable conveying speed
- ✔ Hydraulically lifting primary conveyor

#### Miscellaneous

- ✔ Special painting
- ✔ Lighting package with 6 Xenon spotlights
- ✔ Additional water tank 264.18 gal (1,000 l)
- ✔ Hydraulically operated filling pump for water tank
- ✔ High-pressure water wash down
- ✔ Towing device
- ✔ Camera system
- ✔ Additional storage compartment for cutting tool containers



## WIRTGEN AMERICA

Wirtgen America Inc.  
6030 Dana Way · Nashville, TN 37013, USA  
Phone: (615) 501-0600 · Fax: (615) 501-0691  
Internet: [www.wirtgenamerica.com](http://www.wirtgenamerica.com)