



High-production installation

Rumble strip milling attachment W 50 DC



The W 50 DC rumbler attachment makes rumble strips easy to install



Durable, reliable cold milling with added value

// The W 50 DC Rumbler is a standard W 50 DC cold milling machine with an optional Rumbler attachment installed. The Rumbler attachment permits high-production cutting of milled rumble strips in the standard, preferred 16-in. width at speeds of up to 180 fpm.

Addition of the Wirtgen Rumble Strip Milling attachment makes the W 50 DC even more valuable to an owner. Together they result in a durable, reliable cold mill for general milling use, combined with a proven milling technology for cutting milled rumble strips in shoulders, or down center-lines of two-way pavements.



◀ W 50 DC Rumbler permits high-production installation of rumble strips on existing paved shoulders, or centerlines, at up to 180 fpm

Rumble strips have consistently shown significant decreases in single-vehicle run-off-the-road crashes.

Rumble strips are saving lives



▶ The Federal Highway Administration's Technical Advisory (T 5040.35) endorses shoulder rumble strips for driver safety from run-off-road events, and maintains that milled-in strips are the best option.

▶ FHWA says milled rumble strips are superior because they have little or no effect on the integrity of the pavement structure, and produce greater noise and vibration than rolled or formed rumble strips

▶ While rumble strips can be rolled-in for freshly placed asphalt shoulders, research by the Pennsylvania Turnpike Commission found strips milled into existing shoulders to be superior to rolled-in rumble strips.

A decade of proven rumble strip cutting technology



◀ The Rumbler drum can be mounted on either the left- or right-hand side of the W 50 DC, with easy cutter access.

W1-10/S-R Rhino bits can be used for optimum cutting ▼

The 6-sided pad set (shown) allows for cutting 1' on center. A 3-sided pad set (also available) allows for cutting 2' on center. ▶



The improved W 50 DC Rumbler provides for maximum versatility

/// The W 50 DC Rumbler features a six-sided rumble wheel with urethane pads, powered by a hydraulic rumble wheel drive. The Rumbler drum and wheel can be mounted on either the left- or right-hand side of the W 50 DC, with easy cutter access.

- ▶ The W 50 DC Rumbler cuts up to 180 fpm in asphalt, depending on material and requirements.
- ▶ Rumbler drum and wheel can be mounted on either the left- or right-hand side of the W 50 DC.
- ▶ Custom drum widths and pad sets are available.

W 50 DC rumbler cutter drive system



Cutter drive is an extension of the W 50 DC's standard drum drive system ▲

Rumbling on concrete next to fog line ▼

▲ Mechanical belt drive has proven more efficient and reliable than hydraulic drive.

Rumbling on asphalt next to drip line ►



/// The W 50 DC Rumbler cutter drive is an extension of the W 50 DC's standard drum drive system, using a mechanical belt drive which has proven more efficient and reliable than hydraulic drive. The heavy construction of the Rumbler frame assures long life.

▴ A simple wheel/pad assembly rolls along the pavement surface to actuate the Rumbler sub-frame in and out of the cut.

▴ Special patterns can be achieved with special rumble wheel pads

Equipped for ease of use



◀ A standard, long front pointer is designed for stable, accurate correction when on the job.



Optional camera system mounted on the machine shows operator the quality of his work via the monitor mounted on the control panel. ▲

Optional skip-line kit available to automatically produce long skip line patterns ▶

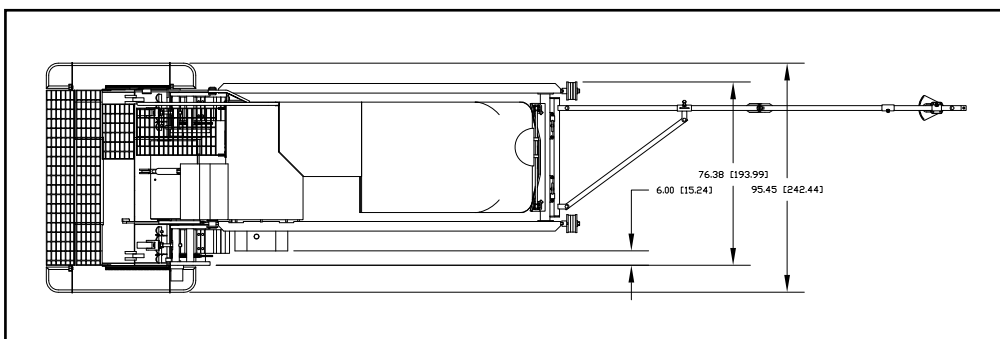
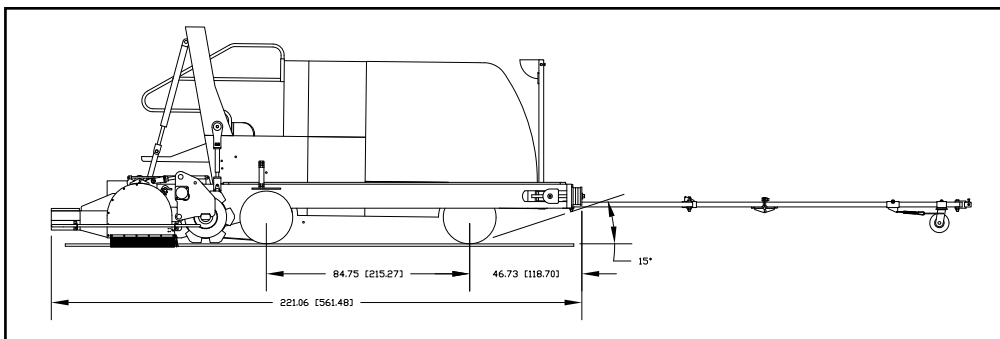


Proven more efficient and reliable

/// A standard, long front pointer is designed for stable, accurate correction when on the job, essential for tracking intermittent references like the pavement “drip” line or a centerline. Also, a short pointer is installed as a standard. Both provide a dual reference which can give the operator a better sense of the W 50 DC Rumbler’s position.

▶ Intermittent patterns can be achieved with the available Skip Line Kit.

Technical specifications	W 50 DC Rumbler
Milling drum	
Standard width	16"
Depth	0 - 1.0"
Number of bits	150
Power source	See W 50 DC specifications
Speeds/gradeability	
Milling speed	0-86 fpm
Travel speed	0-3.3 mph
Rumble speed (3rd gear in rumble mode)	0-200 fpm
Loading	
Ramp angle maximum for clearance	15°
Weights (W 60 with rumbler attachment)	
Operating weight (full tanks)	23,000 lbs
Shipping weight (empty tanks)	21,000 lbs
Special features/considerations	
6-sided rumble wheel with urethane pads	
Hydraulic rumble wheel drive	
Rumble speed up to 180 fpm in asphalt - depends on material and requirements	
Rumble drum can be mounted on LH or RH side of machine	
Custom drum widths available as required	
Special patterns can be achieved with special rumble wheel pads	
Intermittent patterns can be achieved with available Skip Line Kit	





WIRTGEN AMERICA

Wirtgen America Inc.
6030 Dana Way · Antioch, TN 37013, USA
Phone: (615) 501-0600 · Fax: (615) 501-0691
Internet: www.wirtgenamerica.com